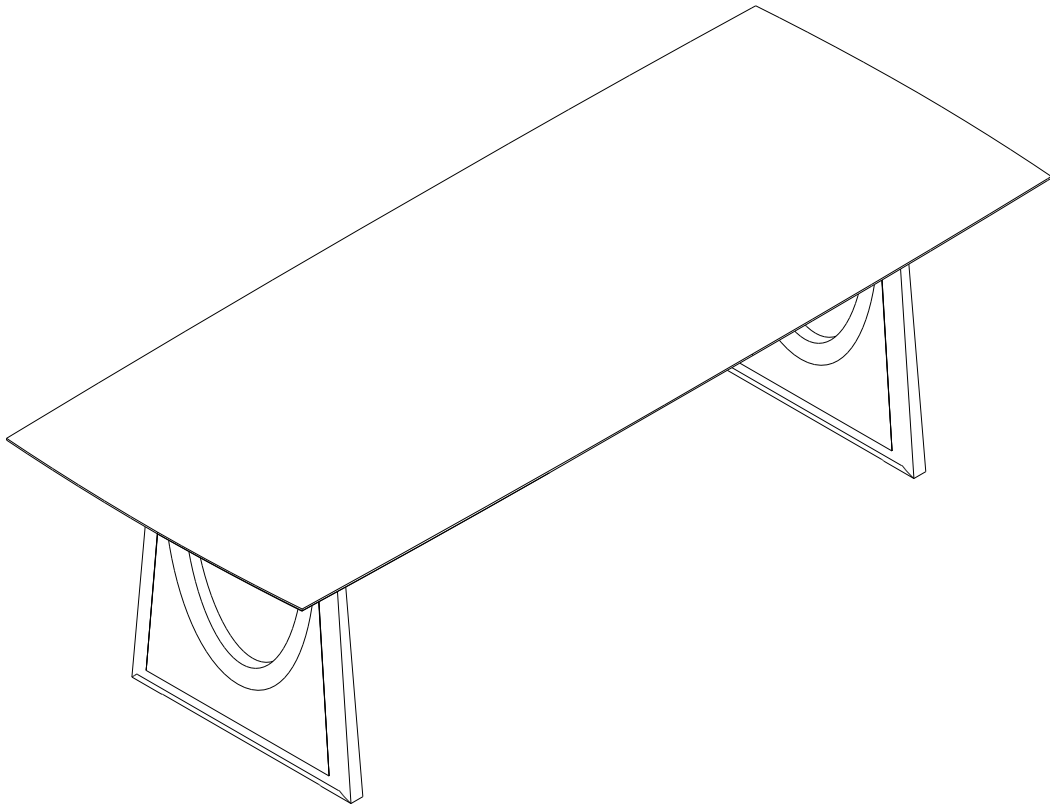


OAK GEOMETRIC DINING TABLE

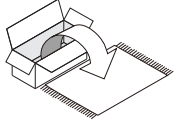
CODE	DESCRIPTION
55013	OAK GEOMETRIC DINING TABLE 250/100/76
55014	OAK GEOMETRIC BLACK DINING TABLE - VARNISHED 250/100/76



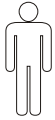
OAK GEOMETRIC DINING TABLE 250 / 100 / 76

ASSEMBLY INSTRUCTIONS FOR DINING TABLE INSTALLATION

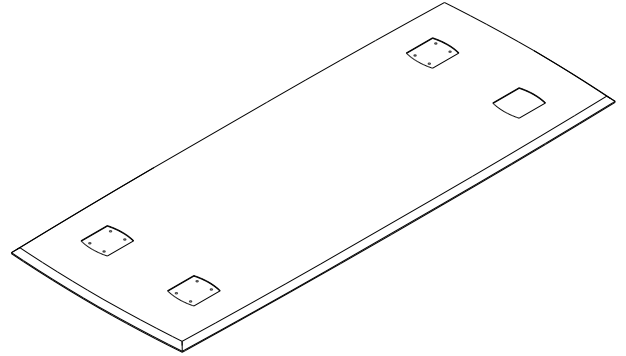
NOTE



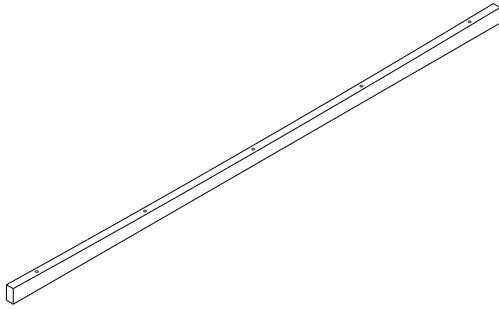
- CAREFULLY OPEN THE CARTON
- REMOVE CONTENTS TO LAY OUT ON THE FLATTENED CARTON, CARPETED AREA, OR ANOTHER PROTECTIVE SURFACE TO AVOID DAMAGE WHILE ASSEMBLING
- CHECK PACKAGE CONTENTS TO ASSURE ALL THE NECESSARY HARDWARE AND PARTS ARE RECEIVED UNDAMAGED
- DO NOT USE DAMAGED OR DEFECTIVE PARTS/HARDWARE
- CONTACT RETAILER FOR ANY MISSING PART AND/OR HARDWARE
- READ THE ASSEMBLY INSTRUCTIONS BEFORE INSTALLATION AND CAREFULLY FOLLOW THE INSTRUCTIONS GIVEN
- SEEK PROFESSIONAL ADVICE IF YOU ARE NOT FAMILIAR WITH THIS TYPE OF INSTALLATION OR HAVE ANY SAFETY DOUBTS UNDERTAKING THE TASK
- IT IS ADVISED TO COMPLETE THIS ASSEMBLY WITH A MINIMUM OF 2 PERSONS

**X2**

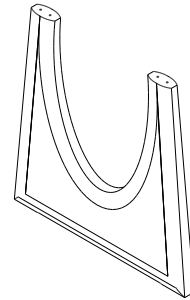
PARTS TO ASSEMBLE

**A** TABLE TOP 1piece

CODE	DESCRIPTION
P4645	TABLE TOP
P4853	TABLE TOP - BLACK

**C** LEG 2piece

CODE	DESCRIPTION
P4647	APRON
P4855	APRON - BLACK

**B** LEG 2piece

CODE	DESCRIPTION
P4646	LEG
P4856	LEG - BLACK

HARDWARE ENCLOSED

 H2056 METAL PLATE 170x150x5mm (4pcs)	 H0882 SCREW M8x50mm (8pcs)	 H0842 SCREW M8x16mm (16pcs)	 H0836 SCREW M6x50mm (10pcs)	 H2055 SCREW M6x60mm (4pcs)
---	---	--	--	---

TOOLS

(Included in packaged)

 H0745 L KEY 4 (1pc)	 H0880 L KEY 5 (1pc)
-------------------------------	-------------------------------

TOOL

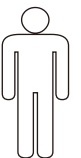
(Not Included in packaged)

 SCREWDRIVER

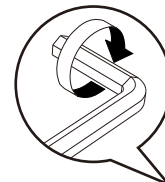
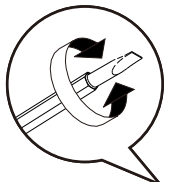
SYMBOLS



DIRECTION

NUMBER OF
PERSONS NEEDED

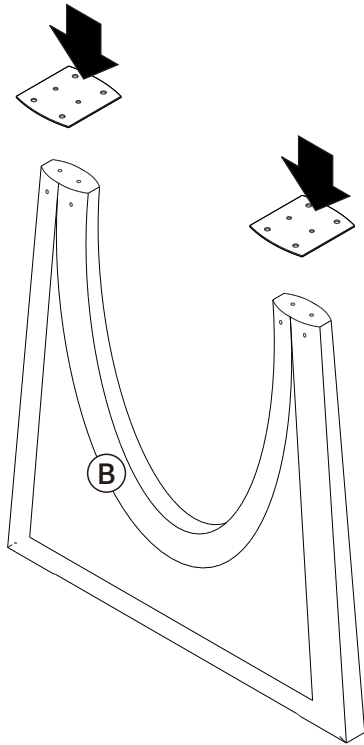
USE HAND

USE L KEY
TO TIGHTENUSE SCREWDRIVER
TO TIGHTEN

OAK GEOMETRIC DINING TABLE 250 / 100 / 76

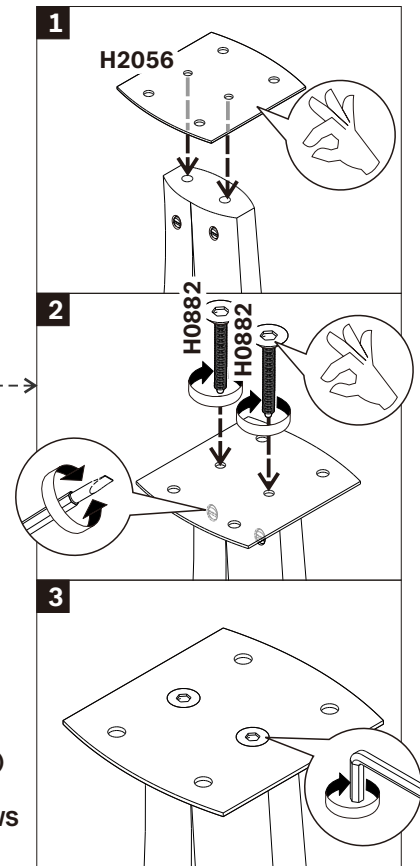
ASSEMBLY INSTRUCTIONS FOR DINING TABLE INSTALLATION

A INSTALLING METAL PLATE TO THE LEGS

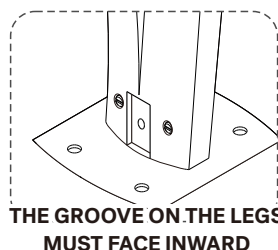
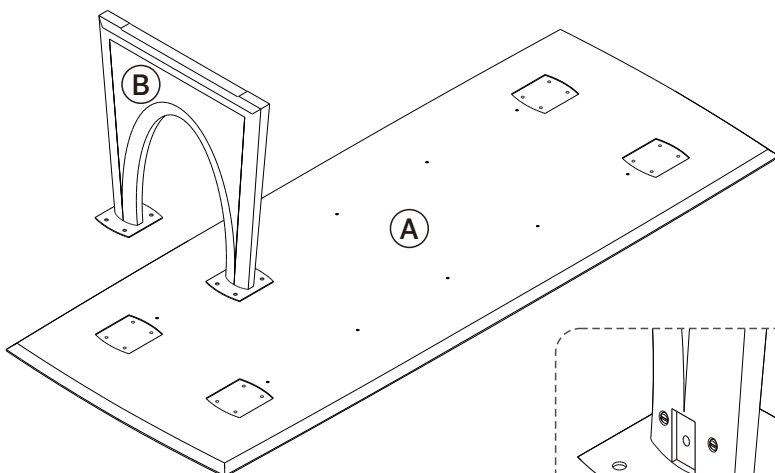


WITH SCREWDRIVER TO FIT SCREW INTO THE BARREL NUT

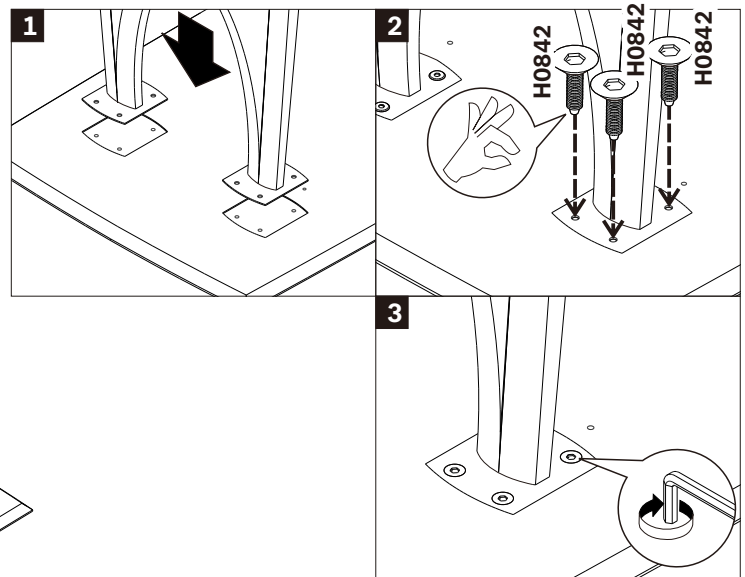
- ! - USE METAL PLATE (4X)
- USE SCREW M8x50mm (8X)
- USE L KEY 5 TO TIGHTEN
- TIGHTEN FULLY ALL SCREWS



B INSTALLING LEG TO TABLE TOP



THE GROOVE ON THE LEGS
MUST FACE INWARD

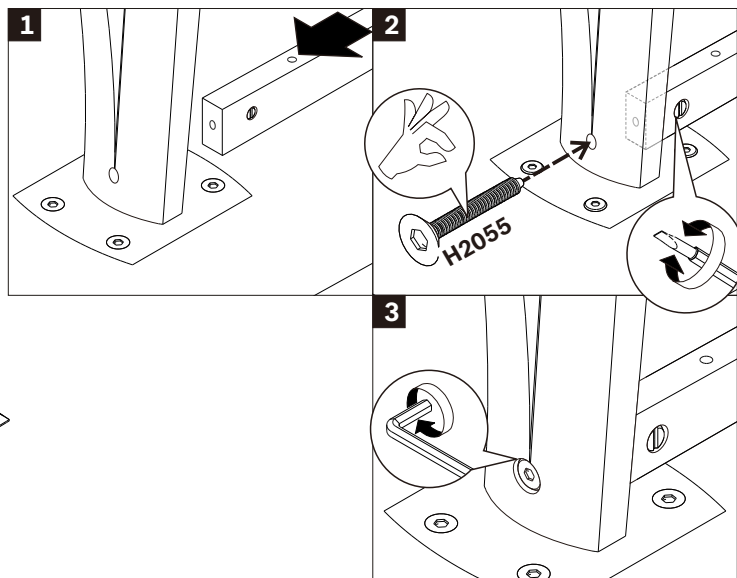
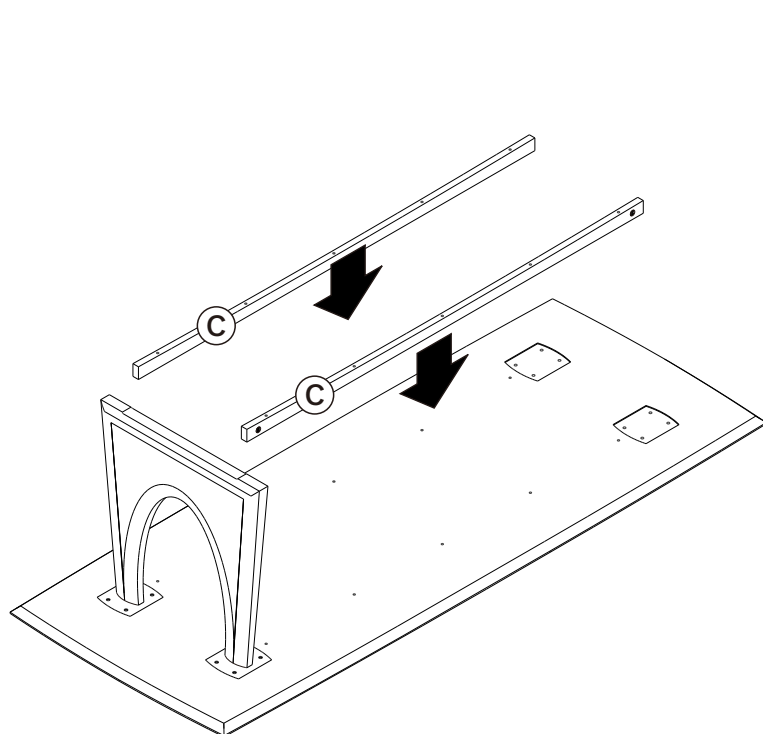


- ! - USE SCREW M8x16mm (8X)
- USE L KEY 5 TO TIGHTEN
- DO NOT FULLY TIGHTEN

OAK GEOMETRIC DINING TABLE 250 / 100 / 76

ASSEMBLY INSTRUCTIONS FOR DINING TABLE INSTALLATION

C INSTALLING APRON TO THE LEG



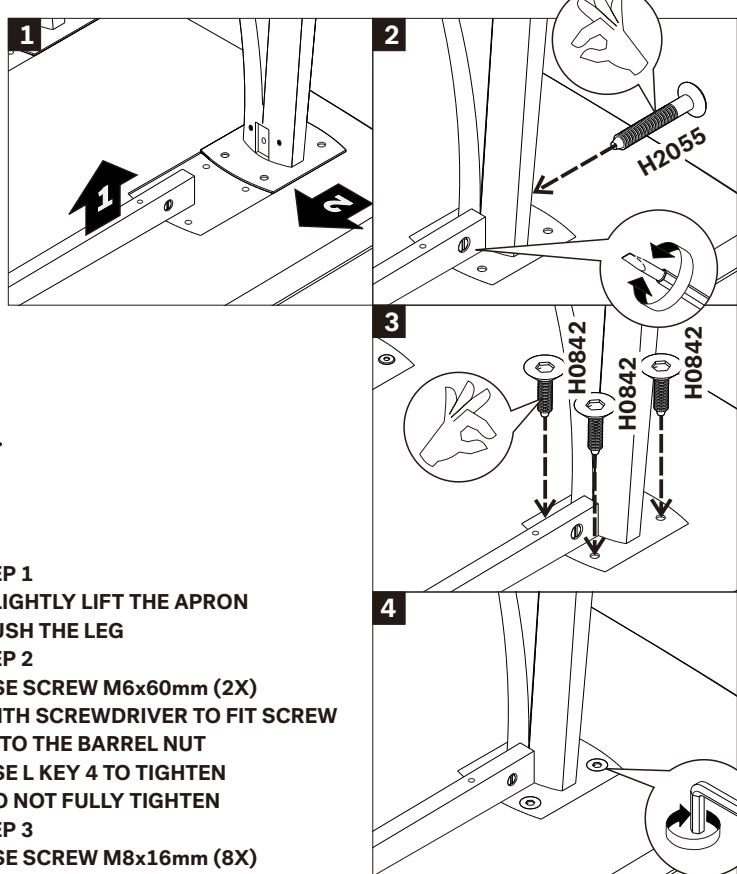
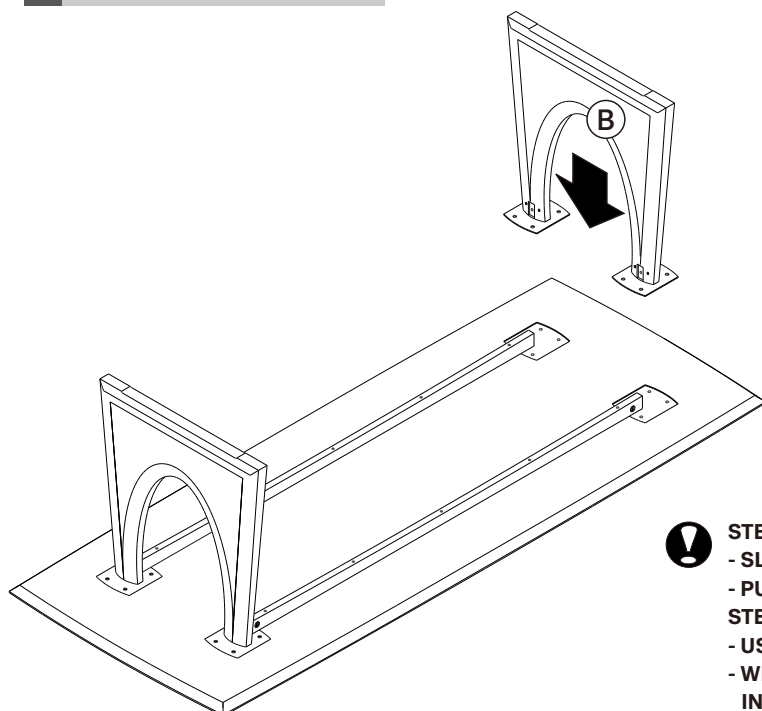
STEP 1

- APRON HOLES FACING INWARD

STEP 2

- USE SCREW M6x60mm (2X)
- WITH SCREWDRIVER TO FIT SCREW INTO THE BARREL NUT
- USE L KEY 4 TO TIGHTEN
- DO NOT FULLY TIGHTEN

D INSTALLING THE LEG



STEP 1

- SLIGHTLY LIFT THE APRON
- PUSH THE LEG

STEP 2

- USE SCREW M6x60mm (2X)
- WITH SCREWDRIVER TO FIT SCREW INTO THE BARREL NUT
- USE L KEY 4 TO TIGHTEN
- DO NOT FULLY TIGHTEN

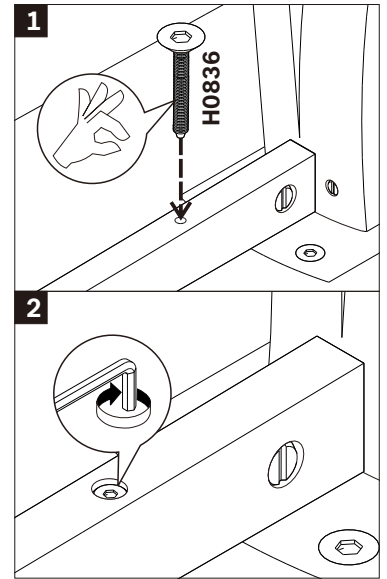
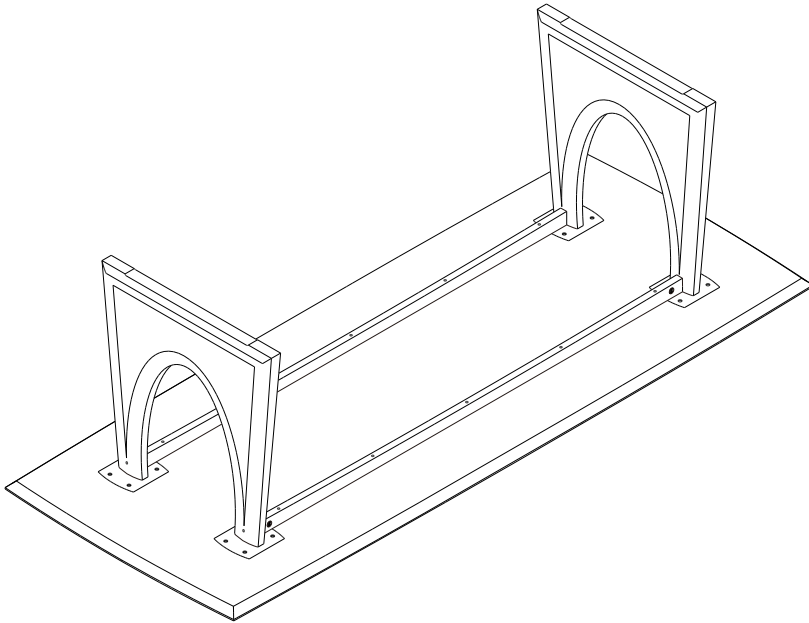
STEP 3

- USE SCREW M8x16mm (8X)
- USE L KEY 5 TO TIGHTEN
- DO NOT FULLY TIGHTEN

OAK GEOMETRIC DINING TABLE 250 / 100 / 76

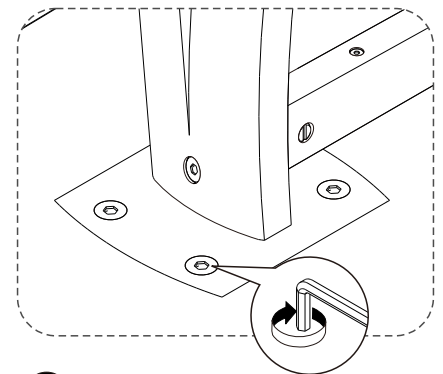
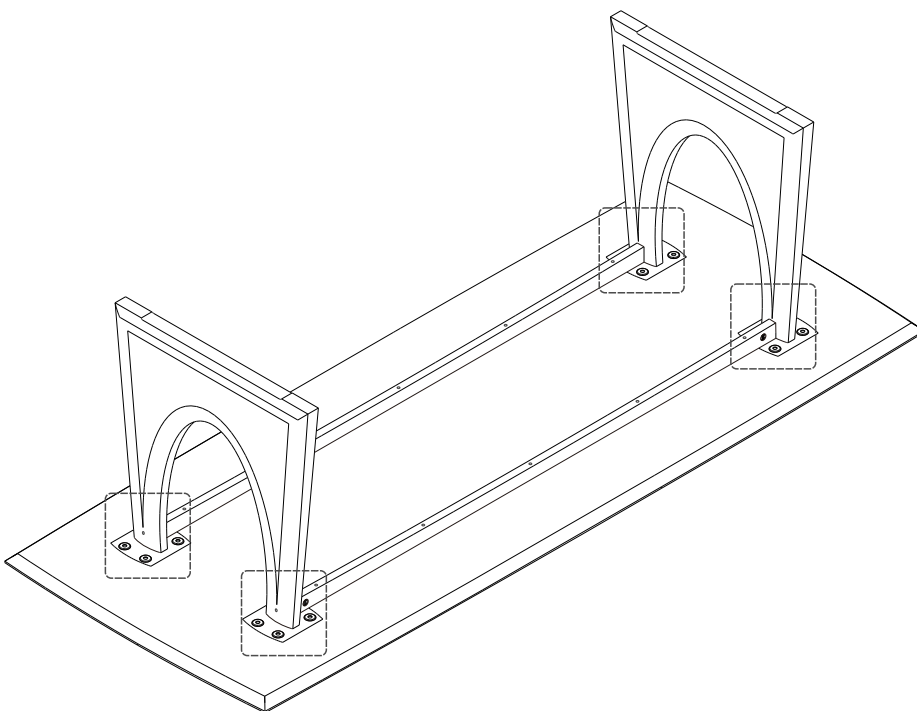
ASSEMBLY INSTRUCTIONS FOR DINING TABLE INSTALLATION

E FIX THE APRON TO THE TABLE TOP

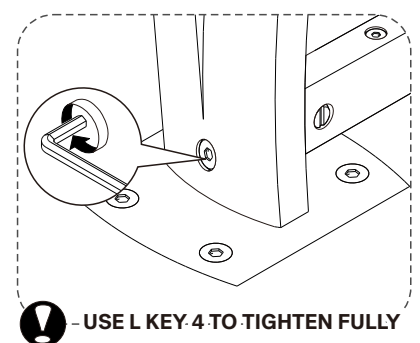


- ! - USE SCREW M6x50mm (10X)
- ! - USE L KEY 4 TO TIGHTEN
- ! - TIGHTEN FULLY

F RE-TIGHTEN ALL SCRWES



- ! USE L KEY 5 TO TIGHTEN FULLY



- ! - USE L KEY 4 TO TIGHTEN FULLY